



Proudly brought to you by





FACTS ABOUT THE COMPANY

42

countries

import our elevators

35

thousand m²

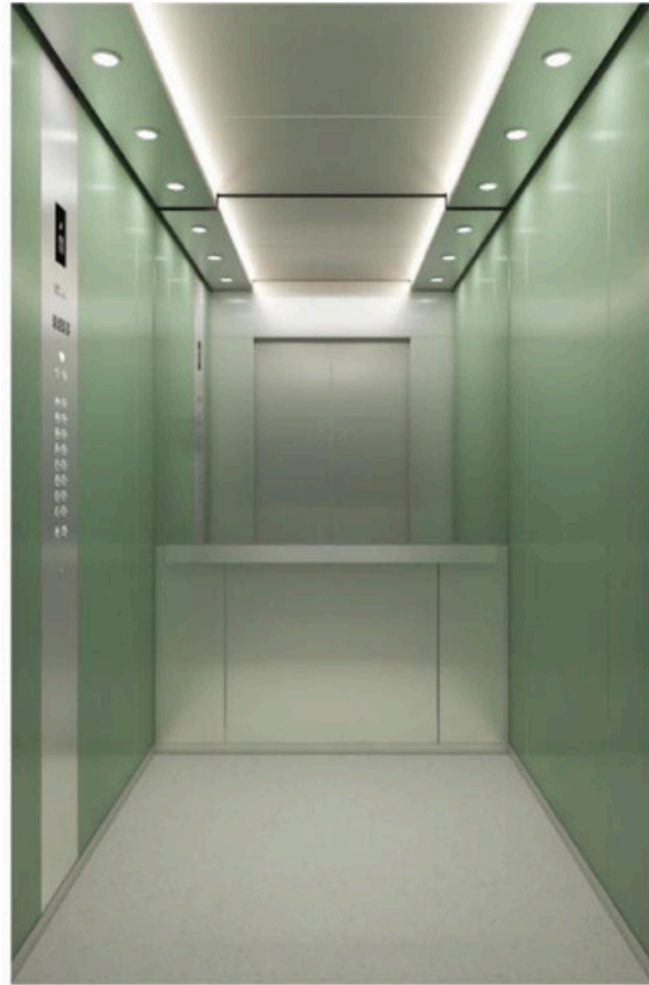
plant occupied area

Autors Elevator is a leading international company at the forefront of high-tech vertical transportation, specializing in elevators, escalators, and moving walkways. Our state-of-the-art factory spans nearly 30,000 square meters, including 25,000 square meters of advanced production space, with an annual capacity of 5,000 elevator and escalator units. We employ a dedicated team of approximately 260 professionals, 35% of whom are highly skilled technicians forming specialized technical and management teams. With key personnel boasting over 20 years of industry experience, Autors Elevator combines innovation, expertise, and reliability to deliver exceptional solutions worldwide.

For many years, AUTORS has been committed to market-oriented, customer-focused operations, establishing and developing a "Triple Marketing System" that integrates sales, technical service, and enhanced service strategies. At the same time, AUTORS prioritizes technological innovation and development, ensuring that our solutions remain at the forefront of the domestic market. Today, we offer 20 product lines encompassing nearly one hundred specifications, supported by an extensive supply chain capable of fulfilling requests of any complexity.

AUTORS has consistently embraced advanced international management concepts and systems, keeping its corporate governance at the forefront of global standards. The company has successfully achieved certification in the ISO9001 Quality Management System, ISO14001 Environmental Management System, and GB/T28001 Occupational Health and Safety Management System. In addition, AUTORS actively implements a comprehensive corporate information system, leveraging advanced technologies and scientific management practices to continually enhance operational efficiency and performance.

Cabin Design - Basic Series



Model AT-801

Model AT-802

Model AT-803

Model AT-804

Ceiling: ATD-817
Ceiling material: Sides painted
Side walls: Painted steel, colour: Ivory PS, RAL1015
Rear wall: Painted steel, colour: Grey Beige PS, RAL1015
Mirror: Centre of rear wall full height PS, RAL1015
Handrails: AT-H-802
Handrails: On rear panel. 1 pc brushed stainless steel
Floor: PVC Floor

Ceiling: ATD-813
Ceiling material: AT-SS-801, brushed stainless steel, lamps, brushed
Side walls: Painted steel, colour: Grey Beige PS, RAL6019
Rear wall: Painted steel, colour: Grey Beige PS, RAL6019
Mirror: Mirror up to the handrail PS, RAL6019
Handrails: 1 pc brushed stainless steel
Floor: PVC Floor

Ceiling: ATD-815
Ceiling material: AT-SS-801, brushed stainless steel, lamps, brushed
Side walls: Painted steel, colour: Telegrey PS, RAL7074
Rear wall: Painted steel, colour: Telegrey PS, RAL7074
Mirror: Mirror up to the handrail PS, RAL7074
Handrails: 1 pc brushed stainless steel
Floor: PVC Floor

Ceiling: ATD-804
Ceiling material: AT-SS-801, brushed stainless steel lamps
Side walls: Painted steel, colour: Cream PS, RAL9001
Rear wall: Painted steel, colour: Cream PS, RAL9001
Mirror: Mirror up to the handrail
Handrails: 1 pc brushed stainless steel
Floor: PVC Floor

Scan for a virtual tour of your new lift



Scan QR code

Scan for a virtual tour of your new lift



Scan QR code

Scan for a virtual tour of your new lift



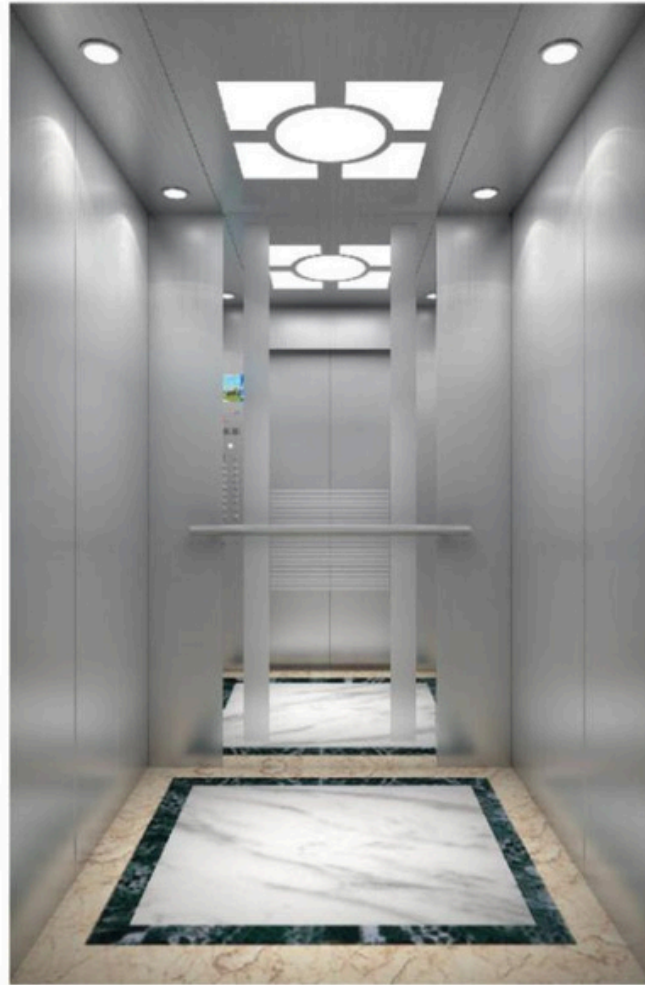
Scan QR code

Scan for a virtual tour of your new lift



Scan QR code

Cabin Design - Standard Series



Model AT-805

Ceiling: ATD-811
Ceiling material: Brushed stainless steel
Side walls: Brushed stainless steel
Rear wall: Brushed stainless steel sides
Mirror: Centre back panel full height
Handrails: On rear panel. 1 pc brushed stainless steel
Floor: PVC Floor, Marble finish

Model AT-806

Ceiling: ATD-813
Ceiling material: Polished stainless steel
Side walls: Brushed stainless steel
Rear wall: Polished stainless steel sides
Mirror: Full back panel full height
Handrails: On both side panels. 2 pc brushed stainless steel
Floor: PVC Floor, Marble finish

Model AT-807

Ceiling: ATD-807
Ceiling material: Polished stainless steel
Side walls: Brushed stainless steel
Rear wall: Polished stainless steel and etched
Mirror: Centre back panel full height and etched
Handrails: Optional
Floor: PVC Floor, Marble finish

Model AT-808

Ceiling: ATD-810
Ceiling material: Polished stainless steel
Skirting: Brushed stainless steel, 50mm
Side walls: Wood finish panels on side with - Brushed stainless steel
Rear wall: Wood finish panels on side with pearl white painted steel centre
Mirror: Centre of side walls
Handrails: Optional
Floor: Marble Floor(Stone+)

Scan for a virtual tour of your new lift



Scan QR code

Scan for a virtual tour of your new lift



Scan QR code

Scan for a virtual tour of your new lift



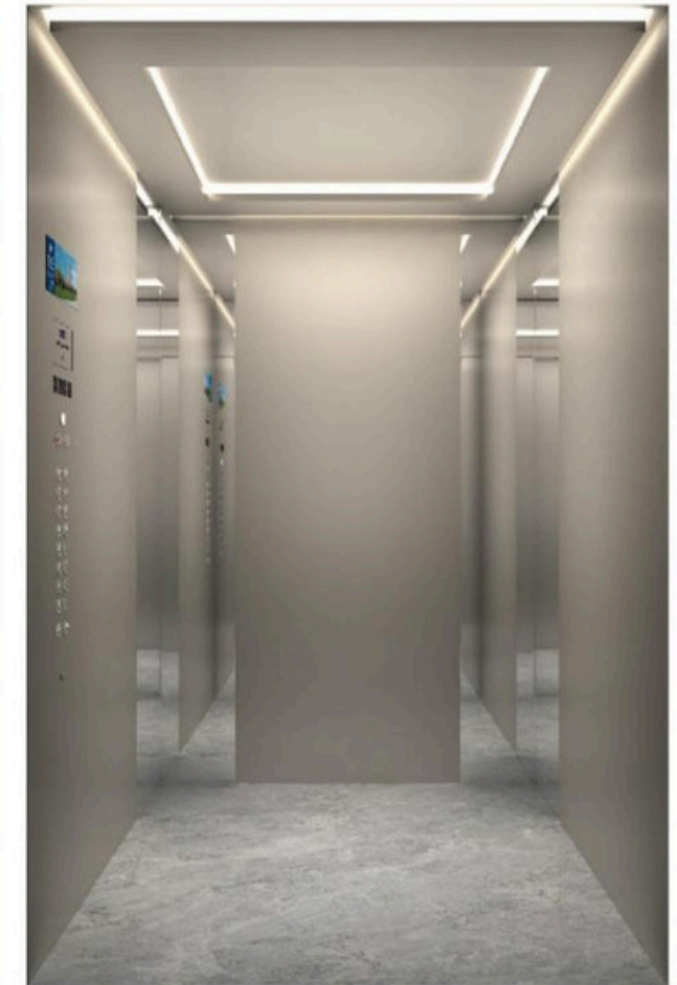
Scan QR code

Scan for a virtual tour of your new lift



Scan QR code

Cabin Design - Premium Series



Model AT-809

Model AT-810

Model AT-811

Model AT-812

Ceiling: To match cabin
Ceiling material: Brushed stainless steel
Side walls: Black titanium stainless steel
Rear wall: Black titanium polished stainless steel
Mirror: Black titanium full back panel full height
Handrails: Optional
Floor: Marble Floor(Stone+) Marble finish

Ceiling: ATD-809
Ceiling material: Polished stainless steel
Side walls: Black titanium etched stainless steel and brushed stainless steel sides
Rear wall: Black titanium etched stainless steel and brushed stainless steel sides
Mirror: Black titanium etched centre panel full height
Handrails: Optional
Floor: PVC Floor: Marble finish to match car panels

Ceiling: Painted steel white to match cabin
Ceiling material: Painted steel
Side walls: Copper polished stainless steel and brushed stainless steel sides
Rear wall: Copper stainless steel centre and brushed stainless steel sides
Mirror: Copper centre panel full height
Handrails: Optional
Floor: PVC Floor

Ceiling: To match cabin model
Ceiling material: Painted steel. light grey PS RAL 7036
Side walls: Painted steel. light grey PS RAL 7036
Rear wall: Silver pearl
Mirror: Side of rear and side panels
Handrails: Optional
Floor: Stone

Scan for a virtual tour of your new lift



Scan QR code

Scan for a virtual tour of your new lift



Scan QR code

Scan for a virtual tour of your new lift



Scan QR code

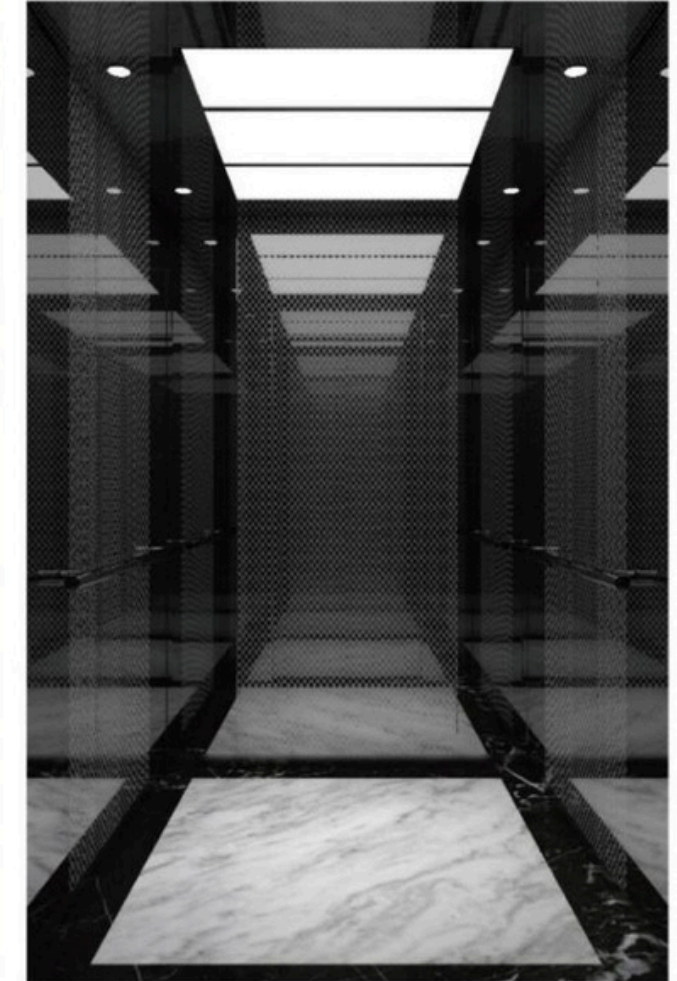
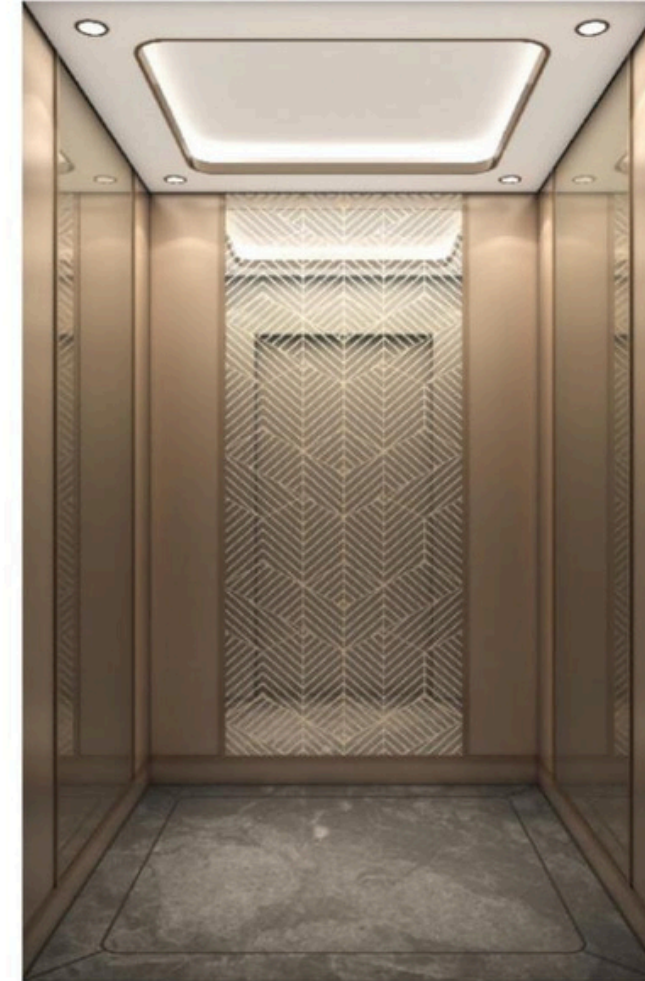
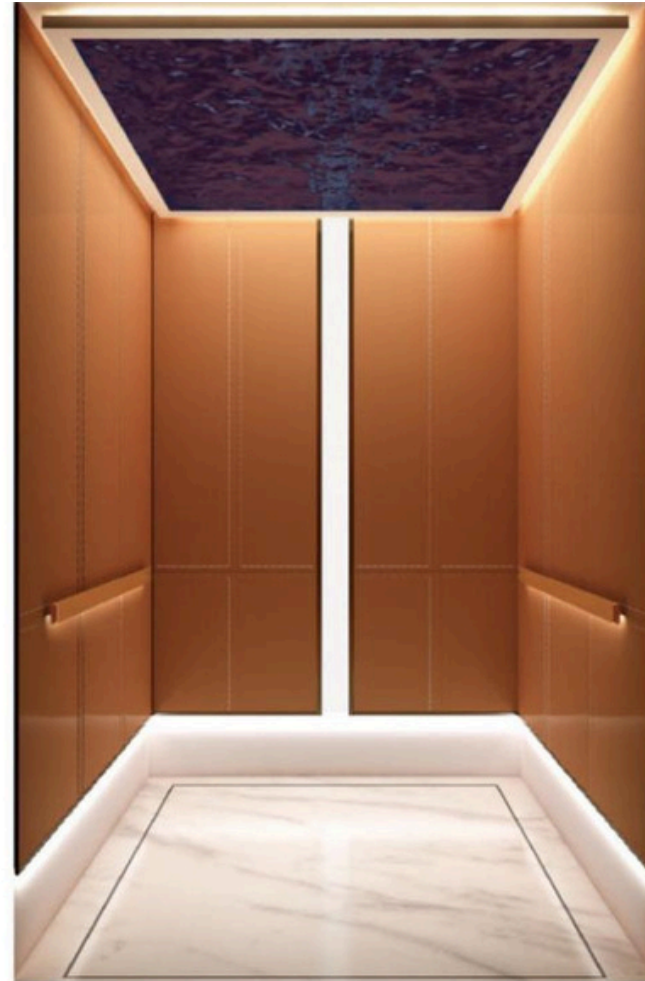
Scan for a virtual tour of your new lift



Scan QR code



Cabin Design - Deluxe Series



Model AT-813

Model AT-814

Model AT-815

Model AT-816

Ceiling: To match the cabin
Ceiling material: Bronze polished stainless steel
Side walls: Bronze brushed stainless steel with leather insert in polished stainless steel frame
Rear wall: Bronze polished stainless steel centre and brushed stainless steel sides
Mirror: Bronze etched centre panel full height
Handrails: Optional
Floor: Stone Floor, To match cabin

Ceiling: Water effect
Ceiling material: Painted steel
Side walls: Leather look
Rear wall: Leather look
Mirror: None
Handrails: Same as cabin
Floor: Stone Floor: Marble finish

Ceiling: Painted steel white to match cabin
Ceiling material: Painted steel Signal white
Side walls: Champagne and gold brushed stainless steel
Rear wall: Champagne and gold polished stainless steel centre and brushed stainless steel sides
Mirror: Champagne and gold etched centre panel full height
Handrails: Optional
Floor: Stone Floor, marble finish

Ceiling: Titanium black
Ceiling material: Brushed stainless steel
Side walls: Titanium black stainless steel
Rear wall: Titanium black etched stainless steel
Mirror: Titanium black full panel full height
Handrails: On side panels to match the cabin
Floor: Stone Floor, marble finish to match cabin

Scan for a virtual tour of your new lift



Scan QR code

Scan for a virtual tour of your new lift



Scan QR code

Scan for a virtual tour of your new lift



Scan QR code

Scan for a virtual tour of your new lift



Scan QR code

Cabin design - Panoramic elevator



Model AT-817

Ceiling: ATD-804
Ceiling material: Polished stainless steel
Side walls: Polished stainless steel
Rear wall: Impact resistance glass with brushed stainless steel frame
Mirror: None
Handrails: On 3 panels. 3 pc brushed stainless steel
Floor: PVC Floor, Marble finish

Model AT-818

Ceiling: To match cabin
Ceiling material: Polished stainless steel
Side walls: Polished stainless steel
Rear wall: Impact resistance glass with brushed stainless steel frame
Mirror: None
Handrails: On 3 panels. 3 pc brushed stainless steel
Floor: PVC Floor, Marble finish

Model AT-819

Ceiling: To match cabin
Ceiling material: Polished stainless steel
Side walls: Impact resistance glass with brushed stainless steel caps
Rear wall: Impact resistance glass with brushed stainless steel caps
Mirror: None
Handrails: On 3 panels. 3 pc brushed stainless steel
Floor: PVC Floor, Marble finish

Model AT-820

Ceiling: To match cabin
Ceiling material: Polished stainless steel
Side walls: Impact resistance glass with brushed stainless steel caps
Rear wall: Impact resistance D-shaped glass with brushed painted steel caps, colour - RAL 7047
Mirror: None
Handrails: On 3 panels. 3 pc brushed stainless steel
Floor: PVC Floor, Marble finish

Scan for a virtual tour of your new lift



Scan QR code

Scan for a virtual tour of your new lift



Scan QR code

Scan for a virtual tour of your new lift



Scan QR code

Scan for a virtual tour of your new lift



Scan QR code

Elevators for medical institutions

The Autors Elevator hospital elevator serves as the vital connection between doctors and patients. Drawing on years of experience and expertise, our designers have developed a unique model that prioritizes passenger comfort and ensures smooth, reliable operation. Tailored to the needs of healthcare environments, this elevator offers a wide range of customizable options from cabin colours to advanced functional features providing the perfect balance of comfort, efficiency, and innovation.

The applications of Autors Elevator products are virtually limitless. Our elevators are designed to provide fast and reliable transportation, even in the most critical emergency situations, and can be customized with advanced control systems to accommodate passengers with disabilities. Every feature reflects Autors Elevator's commitment to care, comfort, and attention to detail — ensuring that every passenger experience is safe, smooth, and thoughtfully designed.

Elimination of electromagnetic interference in modern healthcare

Only the most advanced technologies have been used in the design and creation of Autors Elevator hospital elevators. These innovations effectively minimize electromagnetic interference, ensuring smooth, stable, and reliable elevator performance even in the sensitive environments of modern medical facilities.

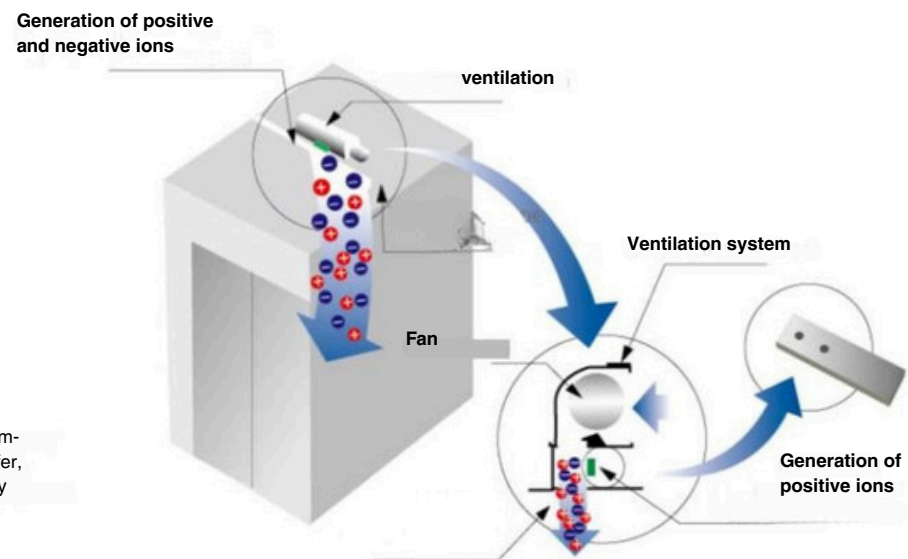
This ensures seamless parallel operation between the elevator and other electrical systems within the building. As a result, Autors Elevator solutions are fully equipped to meet the demanding requirements of modern healthcare environments.

Positive and negative ion generator — an advanced option designed to combat microbes and enhance air quality, providing an extra layer of protection for a healthier environment.

Autors Elevator was the first in the industry to implement positive and negative ion generation technology, significantly enhancing the removal of airborne germs and earning immediate acclaim from customers. To further elevate air purification, Autors Elevator has now introduced a more powerful antibacterial ion generator, setting a new standard for cleanliness, safety, and passenger comfort.

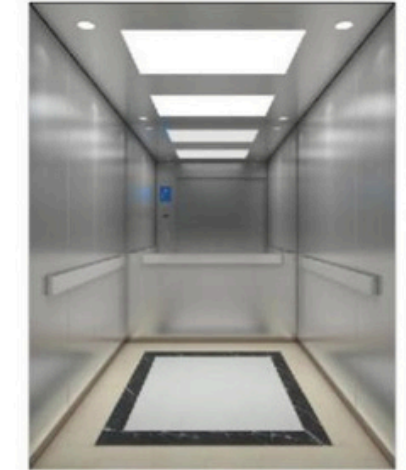
This advanced device emits approximately seven times more antibacterial ions than the original model. It not only neutralizes and removes harmful substances from the air but also functions as an effective deodorizer, making Autors Elevator solutions ideal for medical facilities as well as residential buildings with pets.

Detailed diagram



AUTORS has significantly enhanced its germ-killing system, creating an even cleaner, safer, and more comfortable environment for every passenger.

Cabin design - For medical institutions



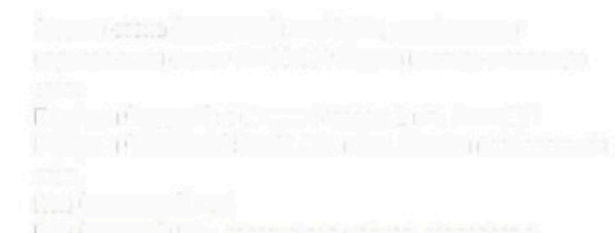
CONTROL STATION for people with disabilities. Disabled COP



ATC104

Model AT-821

- Ceiling:** ATD-815
- Ceiling material:** Brushed stainless steel
- Side walls:** Brushed stainless steel
- Rear wall:** Brushed stainless steel sides with half height mirror
- Mirror:** Full back panel full height
- Handrails:** On both side panels. 2 pc brushed stainless steel
- Floor:** PVC Floor, Marble finish



Premium materials for cabin and door finishes

Painted steel

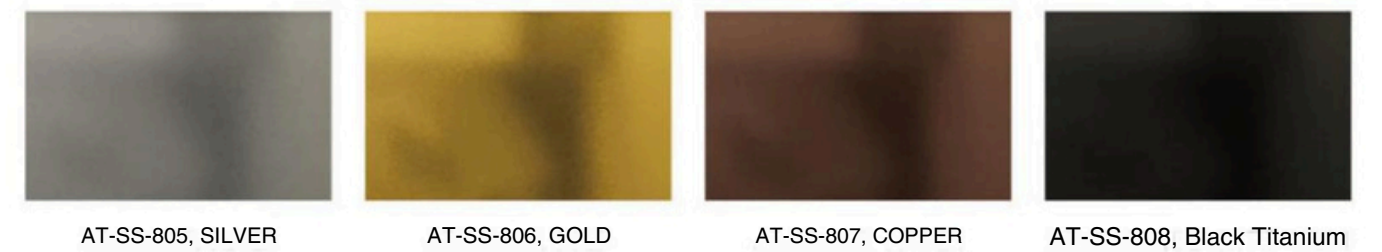


A special anti-fingerprint coating will keep the interior of the elevator cabin in perfect condition.

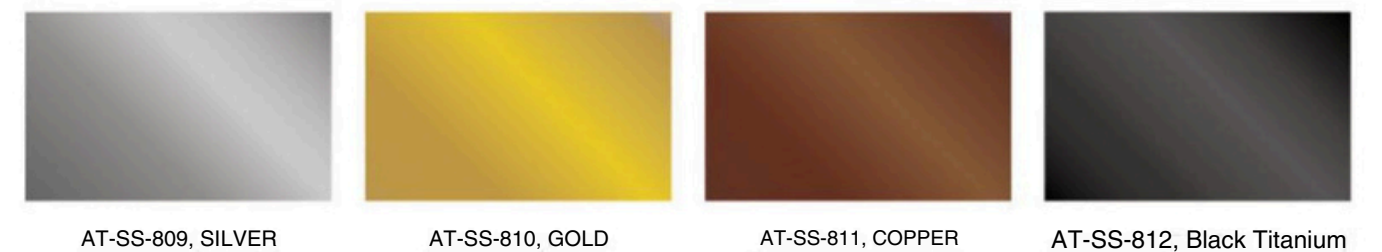
Polished stainless steel



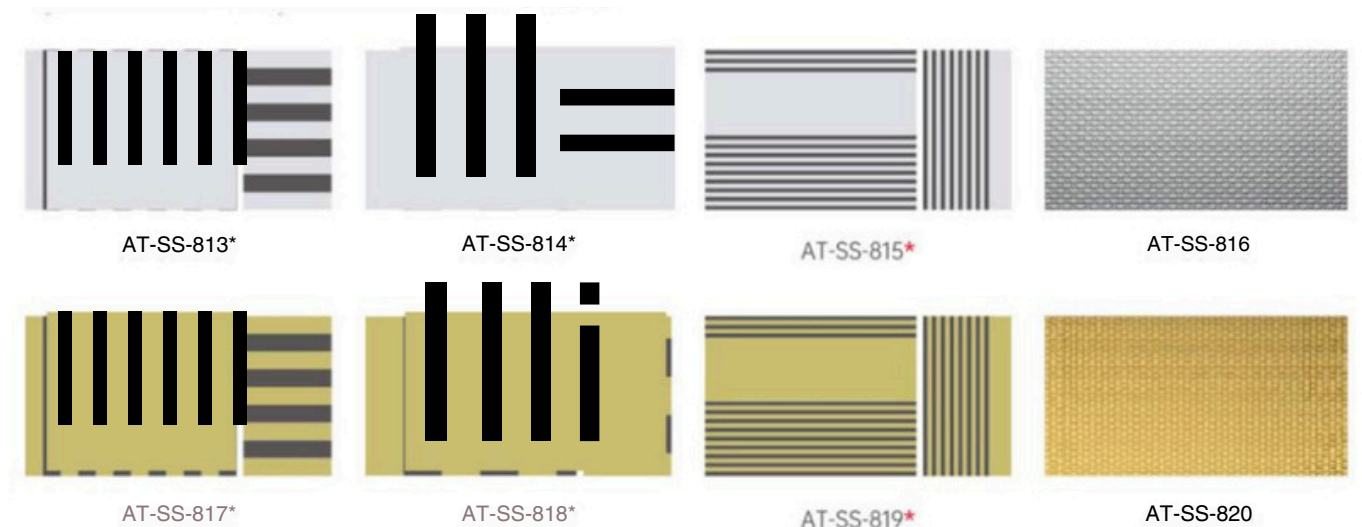
Matte stainless steel



Mirror stainless steel

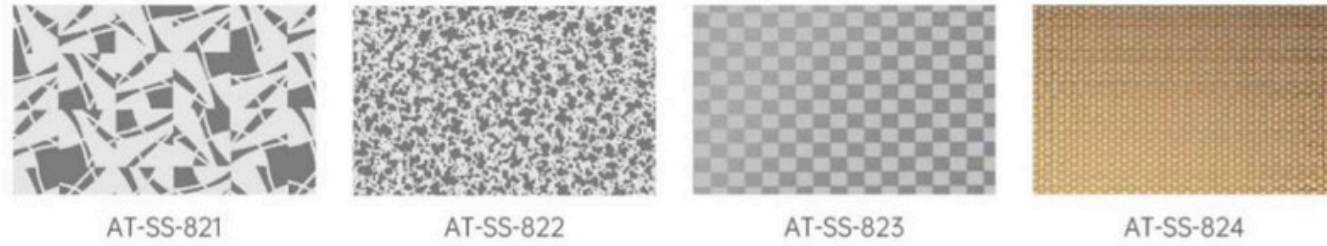


Etched stainless steel



* The drawing on this material can be located vertically or horizontally

Etched stainless steel



Textured stainless steel



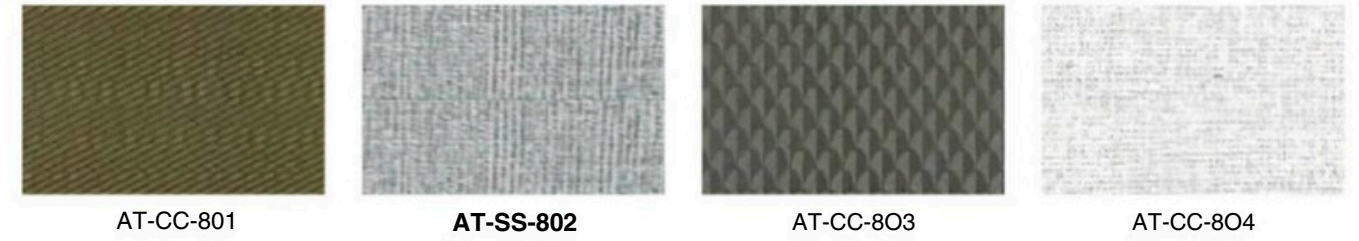
Vinyl - coated metal



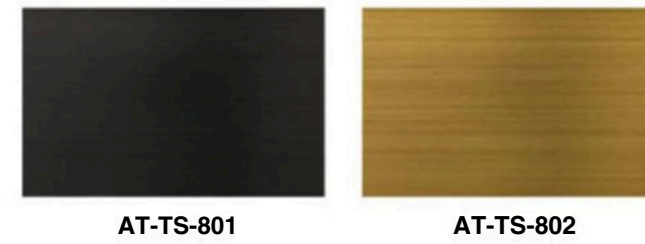
Wood look metal



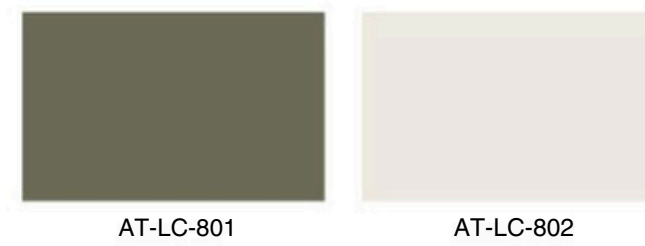
Metal with a fabric coating



Metal with a textured coating



Metal with leather-like coating



Coloured glass



Transparent glass



Floor finishing materials

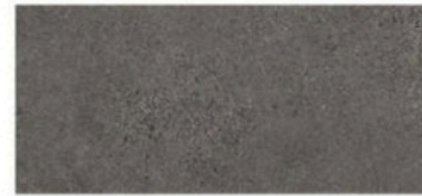
Rubberized coating/PVC



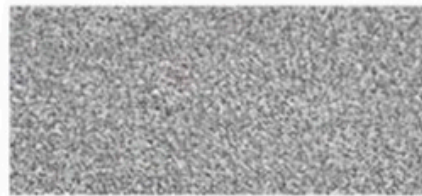
AT-FRC-801



AT-FRC-802



AT-FRC-805



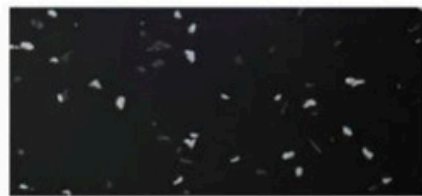
AT-FRC-804



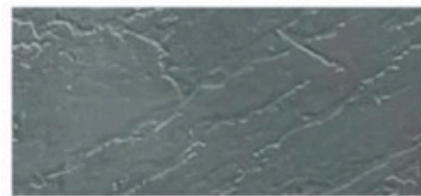
AT-FRC-805



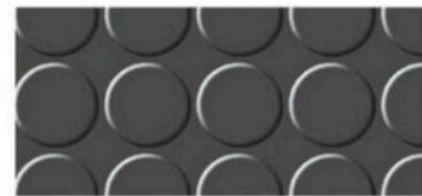
AT-FRC-806



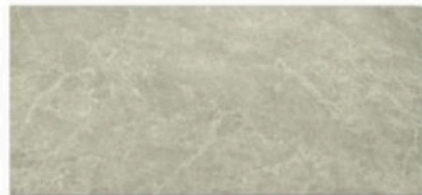
AT-FRC-807



AT-FRC-808



AT-FRC-809



AT-FRC-812



AT-FRC-813

Metal



AT-FMC-801



AT-FMC-802

Floor for self-finishing

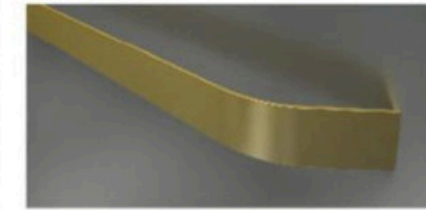


AT-FO-801

Handrails



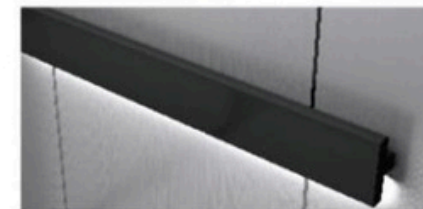
AT-N801
Round stainless steel handrail



AT-N802
Flat stainless steel handrail



AT-H805
Round stainless steel handrail



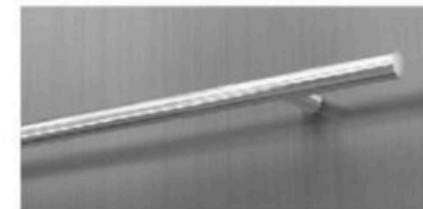
AT-N804
Flat stainless steel handrail



AT-N805
Round handrail made of mirror



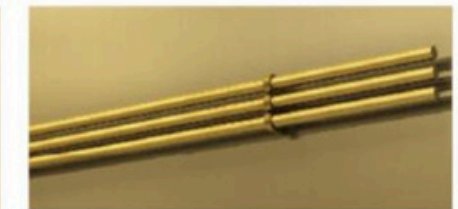
AT-N806
Double handrail



AT-N807
Round stainless steel handrail



AT-N808
Round stainless steel handrail



AT-N809
Round stainless steel handrail

Baseboards



AT-SS-801



AT-SS-802



AT-SS-803



AT-SS-804

Mirrors



AT-M801



AT-M802



AT-M803



AT-M804



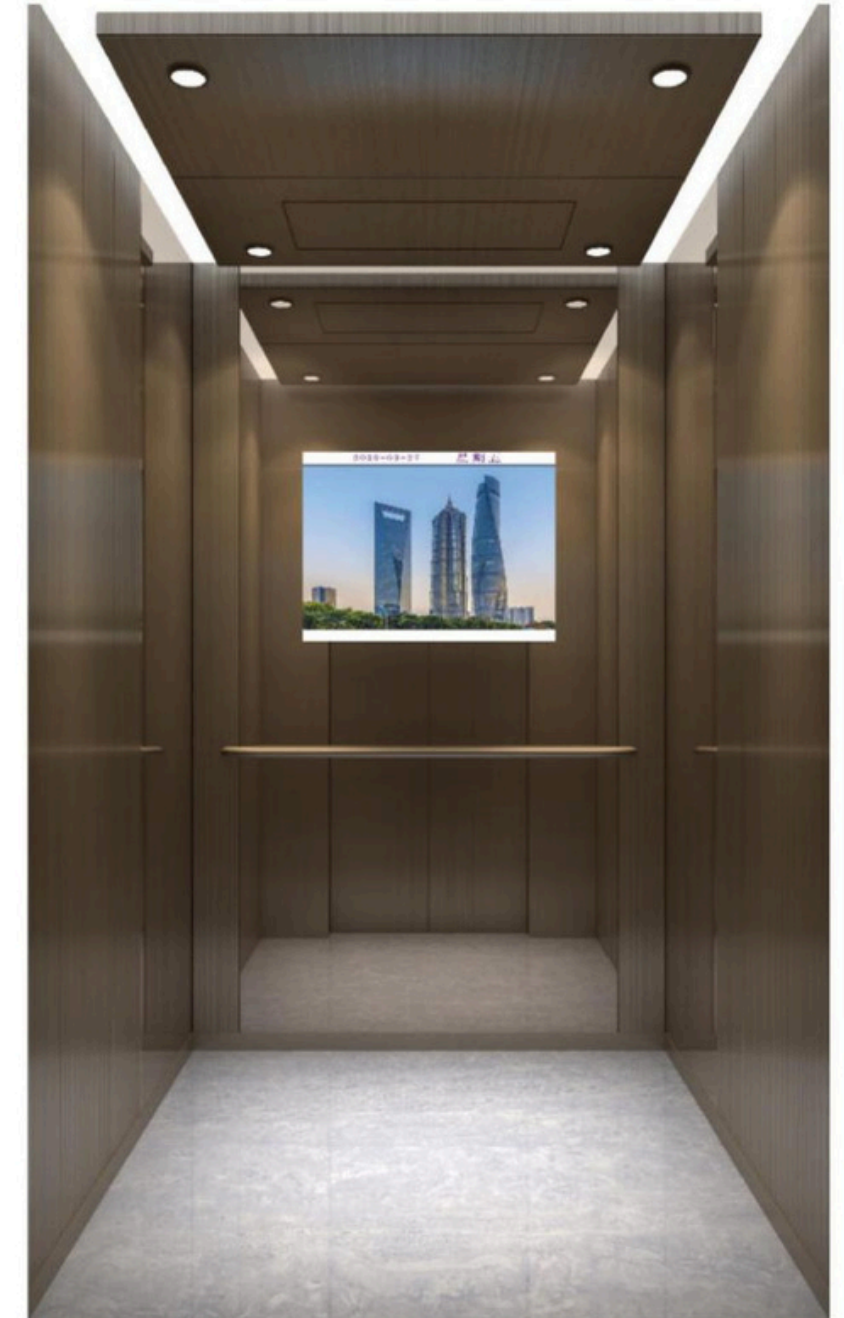
Built-in TV panels



AT-TV-801



AT-TV-802



AT-TV-803



It is possible to use displays of 24 and 32 inches.

TV panel diagonal	Size of the TV panel, mm
24"	531*299
32"	697*392

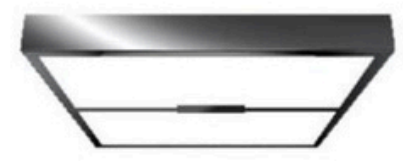
Decorative ceilings



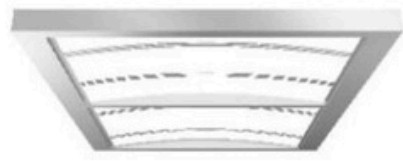
AT-D80T



AT-D802*



AT-D803*



AT-D804



AT-D805*



AT-D806*



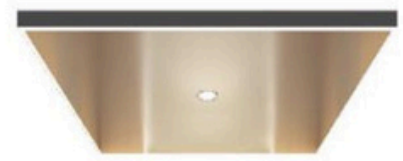
AT-D807



AT-D808



AT-D809



AT-D810



AT-D811



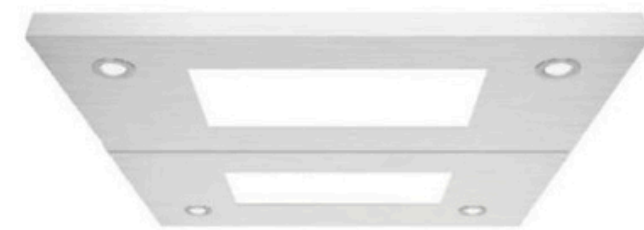
AT-D812



AT-D813



AT-D814*



AT-D815*



AT-D816*



AT-D817

Finishing options



AT-SS-801, SILVER



AT-SS-802, GOLD



AT-SS-803, COPPER



AT-SS-804, Black Titanium



AT-SS-809, SILVER



AT-SS-810, GOLD



AT-SS-811, COPPER



AT-SS-812, Black Titanium

Landing door design options



AT-SD801
Matte steel,
Black&Gold

AT-SD802
Matte steel,
Coffee&Gold

AT-SD803
Matte steel,
Champagne & Gold

AT-SD804
Matte steel,
Black Titanium



AT-SD805
Mirror etched steel,
Bronze

AT-SD806
Mirror etched steel,
Rose&Gold

AT-SD807
Mirror etched stainless steel,

AT-SD808
Matte etched stainless steel



AT-SD809
Glass doors in stainless steel.



AT-SD810
Mirror etched stainless steel,

Signaling devices



DISPLAYS



LCD4.37 LCD6.4"
LED



LCD4.37 LCD6.4"
LCD



LCD7"/"LCD8'7
LCD 10.1"



15"
LCD with photo/video

LOP AND FLOOR INDICATORS (surface mounted)



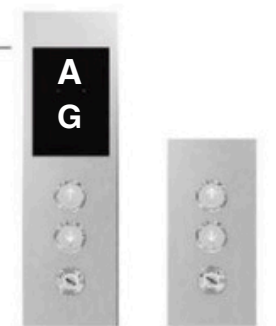
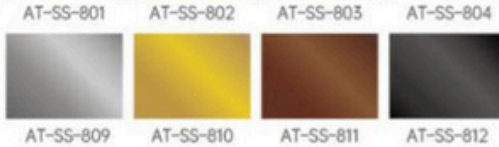
ATL801 ATL802



ATL803



ATL804



ATL805 ATL806

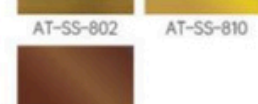
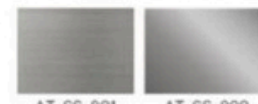
INDICATOR buttons



ATB801



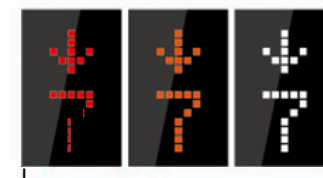
ATB802



AT-SS-811



DISPLAYS



LCD 4.3" LCD 6.4"

LED



LCD 4.3" LCD6.4"

LCD

Buttons



ATVZZ



ATV31

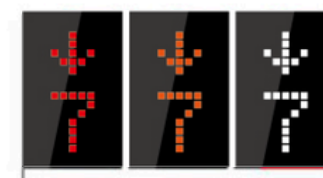
(Braille is applied)

ATC802

Split Version



DISPLAYS



LCD4.37 LCD6.4"

LED



LCD4.37LCD6.4"

LCD

КНОПКИ



ATV801



ATB802

(Braille font is applied)

ATC803

LOP AND INDICATORS ON FLOOR



ATL812



ATL813 ATL814
(surface mounted)



ATL815 ATL816



ATL807 ATL808
(Surface mounted)



ATL809 ATL810



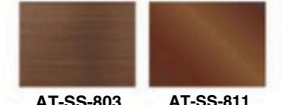
ATL811
Split option (touch + push-button)



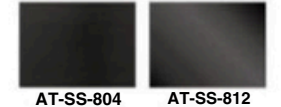
AT-SS-801 AT-SS-809



AT-SS-802 AT-SS-810



AT-SS-803 AT-SS-811



AT-SS-804 AT-SS-812

Signalling devices



ATL817



ATL818



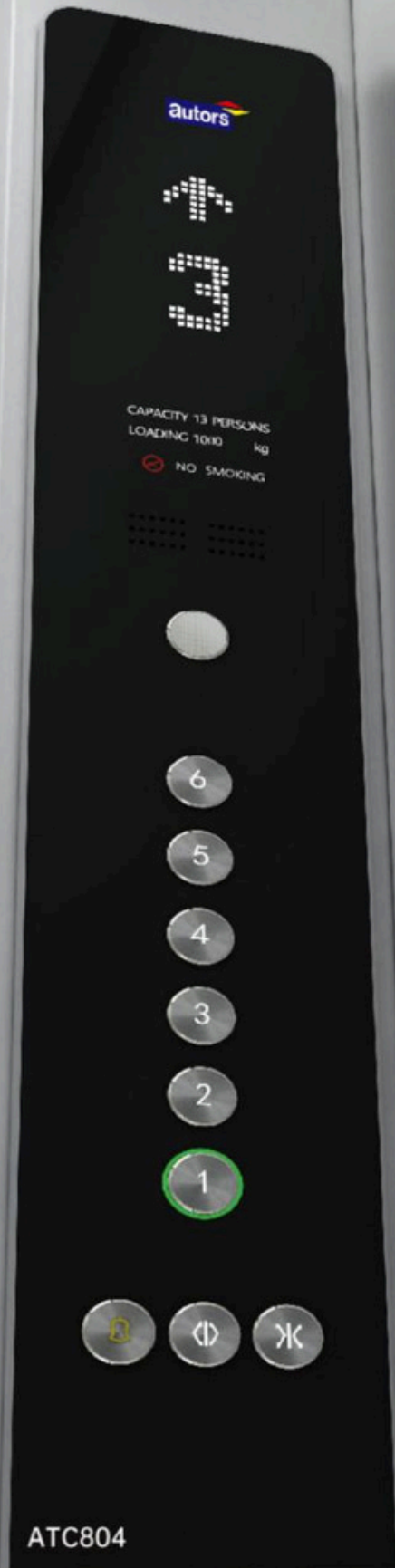
ATL819



ATL820



ATL821



ATC804



ATL822



ATL825



ATL824



ATL825



ATC805



ATC806



ATL901



ATL826



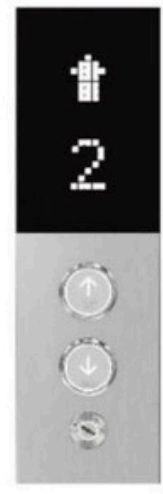
ATL827



ATC807



ATL828



ATL829



ATL830



ATL831



ATL832

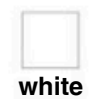
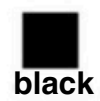
Sensor series

The front panel is crafted from durable tempered glass, combining safety with sleek, modern aesthetics.



Designing your elevator

VSK190



Featuring advanced glass technology combined with stylish and contemporary design

BCG401



TFT series
Sleek, intuitive, and
smart user interfaces



ATC814

TFT Display



Video TFT display



Touch Screen Display



Distribution systems/Designation control

MONARCH Series



AT-DDS-T1-B1-M

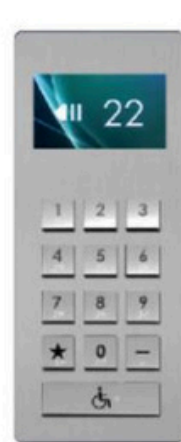
10.4-inch touchscreen, support stand for the order devices (supports IC card)



AT-DDS-T1-B2-M
Wall-mounted version
(supports IC card)



AT-858-M



AT-DDS-K1-M



AT-DDS-K1-IC-M



AT-DDS-T1-B1-M



AT-DDS-B1-M
Turnstile version



AT-DDS-T1-M
10.4 inches touch screen



AT-DDS-T2-M
15-inch touch screen



Control panels



AT-C2401



AT-C2402



AT-C2404

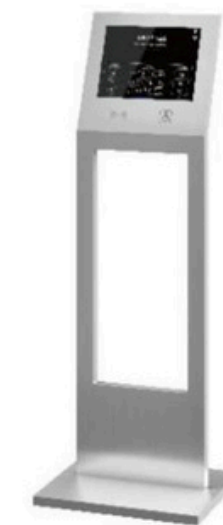
STEP Series



AT-DDS-STEP05 AT-DDS-STEP06 AT-DDS-STEP07/8



AT-DDS-STEP04



AT-DDS-STEP01 AT-DDS-STEP02 AT-DDS-STEP05

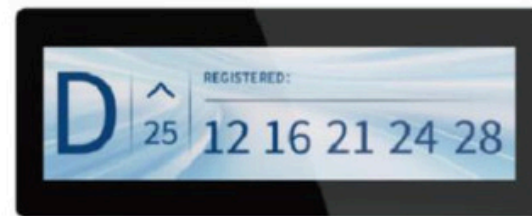


Destination floor indicators



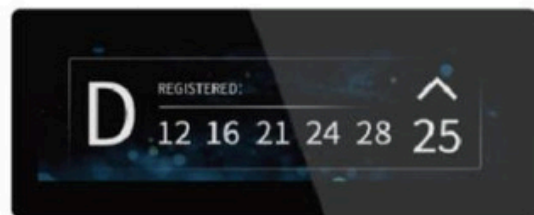
AT-SG001

Overall size: 594*214*4 mm
Screen size : 580*200*20 mm
Glass panel, Black



AT-SG002

Overall size: 780*310* 4mm
Screen size : 766*296*60mm
Glass panel , Black 29-
inch interface, Dark Color



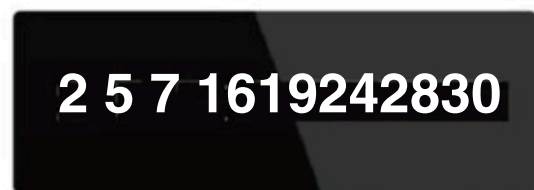
AT-SG003

Overall size: 780*310* 4mm
Screen size : 766*296*60mm
Glass panel , Black 29-inch
interface, Light Color



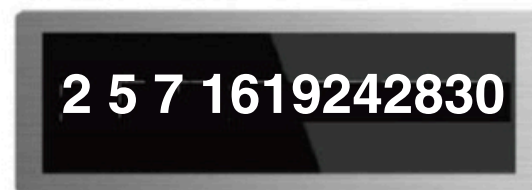
AT-SG004

Overall size: 780 *310* 4mm
Screen size : 766*296*60mm
Stainless steel panel 29 -inch
interface, Dark Color



AT-SG005

Overall size: 590*206*4 mm
Screen size : 576*192*60 mm
Glass panel, Black Dot
matrix HCB-R602



AT-SG006

Overall size: 590*206* 4mm
Screen size : 576*192*60mm
Stainless steel panel Dot
matrix HCB -R602



Elevator signs



AT-840
Active signal



AT-850
Passive signal



AT-860

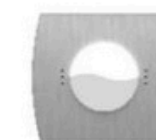


AT-880
Passive signal

Arrival indicator



AT-950



AT-960



AT-970



AT-980



AT-990



Proudly brought to you by



CONTACT US

✉ info@globalelevators.au

🌐 www.globalelevators.au

